



**Solving your well intervention problems
safely, economically and reliably**
Less Risk, Less Downtime

Company Overview



Solving your well intervention problems safely, economically and reliably
Less Risk, Less Downtime

Established in the Taranaki region of New Zealand in 2017, Taranaki Thru Tubing Tools is a customer focused service provider of Thru Tubing, Fishing, Plug and Abandonment Tools, Equipment, Personnel and Engineering support to Oil and Gas Service Providers, and Operators alike. Our team of highly experienced personnel perform a wide range of interventions every year, delivering improved economics, less risk, NPT and well-possession time.

Reducing Well Service and Intervention Operations Cost

We are fully aligned with our customers requirement to reduce costs and outgoings from their Well Servicing Operations - whilst ensuring provision of reliable, well maintained equipment and consistency in the quality of our service execution. We identify and execute on all available cost reduction opportunities, alongside contingency tool planning, to cover all your Well Servicing and Intervention Operations.

Providing Performance Optimized Solutions from Industry Subject Matter Experts

Our team of the highest caliber of Engineers are committed to providing you with performance optimized solutions to meet your individual requirements and objectives - no matter how challenging or complex they may be. Our team of experts apply their global expertise and industry lessons learned to all aspects of operations. From pre-project concept, through to execution, post-job evaluation and future project development opportunities, we are positioned to become your solution provider of choice.

We offer you access to a wealth of knowledge and experience. Our collaborative and proactive mindset is focused on relationship building and delivering the highest levels of service quality.

Leveraging our Global Expertise, Regional Knowledge & Proactive Support

Our SME's leverage expertise gained globally, including from the Middle East and North Africa, Europe, North America, Asia and Australasia. Their regional knowledge and proactive support ensures that all tool, equipment, personnel, and job specific contingencies are in place prior to mobilization and throughout the operation.

Reducing NPT via our Dedicated Maintenance & Service Facilities

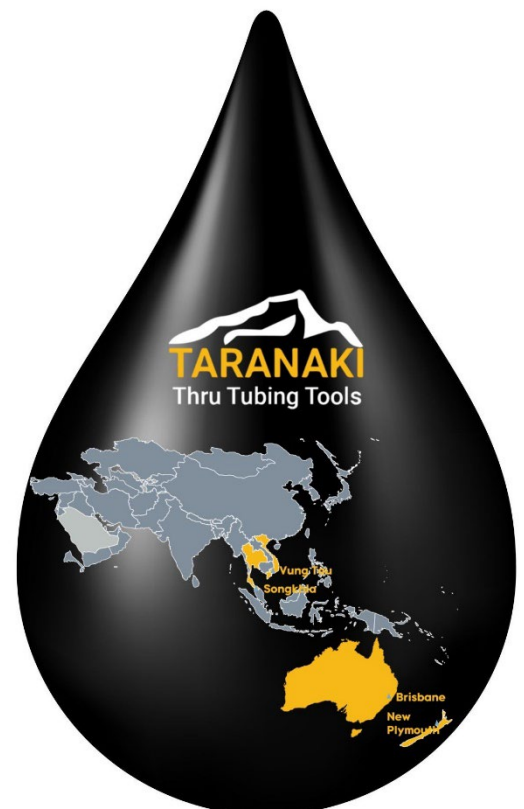
Our current locations across Asia Pacific provide complete Thru Tubing solutions to meet all your unique challenges and operational problems. We have dedicated and well-equipped maintenance facilities, enabling us to be fully self-sufficient in running and performing preventative maintenance for a complex range of tools, both in the workshop and in the field.

Reducing NPT via availability of extensive in Country Assets & Inventory

We have extensive Thru Tubing assets and inventory tools available in several strategic locations, removing the additional risks with equipment sourcing and availability, and the associated downtime. Our infrastructure allow us to quickly deploy our inventory and services globally.

Our Locations.

Location	Contact Details
New Zealand	Taranaki Thru Tubing Tools 8a Swans Road, New Plymouth, ashley.peat@taranakithrutubingtools.com
Thailand	Taranaki Thru Tubing Tools (Thailand) Limited 426/27 Thanadee Klongwong road, Moo 2, Thumbol Phawong, Songkhla office@taranakithrutubingtools.com
Australia	Taranaki Thru Tubing Tools Pty Ltd 32 Hawker Rd, Burton 5110 South Australia office@taranakithrutubingtools.com



THRU TUBING SERVICES

Leveraging on our wealth of SME knowledge and experience in all aspects of Thru Tubing operations, our comprehensive solutions position us to become your provider of choice for all your Thru Tubing requirements .

Sand/ Abrasive Cutting & Perforating
Installing & Retrieving Velocity Strings
Setting & Retrieving Plugs
Stimulation Operations
Thru Tubing Inflatables
Shifting Sliding Sleeve Doors

Fishing & Retrieval
Milling
Underreaming
Tubing & Casing Severance
Wellbore Departure – Casing Exits
& TT Whipstocks

FISHING AND PLUG & ABANDONMENT SERVICES

Extending our expertise in mature field solutions, capabilities include Plug and Abandonment, and Fishing Services.

Open & Cased Hole Fishing

Plug and Abandonment

Internal & External Pipe

Severance

Open & Cased Hole Side-track

Section Milling

Slot Recovery

Casing & Tubing Patches

Packer Milling & Retrieval

Open & Cased hole Washover
Operations

Custom-built Tools & Solutions

Slickline, wireline & Coiled Tubing
Recovery

External Training for Operators

COIL-LINK™

INTELLIGENT COILED TUBING

Field proven with over 200 + runs, operators have found decision making is made easier with Coil-Link.



INCREASE

Operational Efficiency



DECREASE

Overall OPEX with single trip efficiency



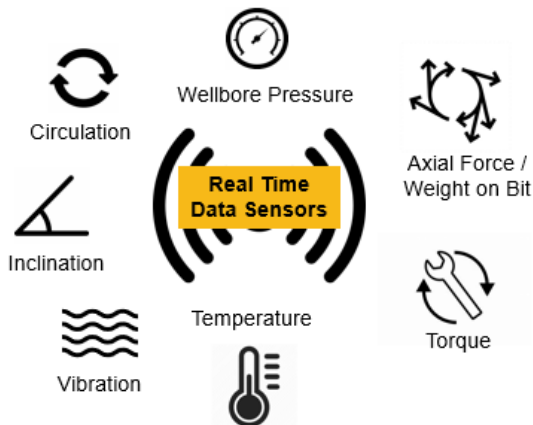
MINIMIZE

Risk of stuck pipe and protect TE assets

Coil-Link's Intelligent Coil system allows operators to receive **real-time information** on downhole conditions during milling and other operations. It communicates with surface using mono-conductor e-line, delivering **precise, instant information and data** about downhole conditions, enabling the ability to make decisions quickly with certainty before problems occur.

Coil-Link™ - Real Time Sensors

Coil-Link's communicates with surface using mono-conductor E-Line cable. These sensors provide reliable downhole measurements including;



This precise real-time data significantly reduces non-productive time by:

- Avoiding unnecessary bit trips with real-time downhole motor and bit diagnostics
- Avoiding or recovering from stalls in seconds, even with nitrogen rich drilling fluid
- Reducing stuck pipe events by controlling debris size and monitoring bottomhole pressure

Fundamental to our Business and Embedded in our Organization



Health, Safety, Environment and Quality are fundamental to the success of our business and embedded into all levels of our organization.

Our client focused, integrated management system, is built on globally applied, non-negotiable policies, processes and procedures to increase service quality, safety, and reliability, while ultimately managing risks for our customers.

We invest in ongoing competency training for all our organization ensuring they are equipped with the tools and resources required to deliver all jobs safely, efficiently and consistently.

Our HSEQ management system has been certified to

ISO 9001:2015
Quality Management



ISO 14001:2015
Environmental Management

ISO 45001:2018
Occupational Health and Safety
Management

ZERO recordable Lost Time Injury (LTI)

Taranaki was founded in May 2017 and commenced Operating in March 2018. Since the first operations in March 2018, we have a 100% success rate on all our interventions we have been engaged to deliver to our customers.

While we strive for flawless execution, we believe that excellence cannot be achieved unless we stride towards it safely. To date*, we have achieved **ZERO recordable Lost Time Injury (LTI) globally** – a testament to our focus in keeping the people and environment around us safe.



ZERO

LTI recorded

OWNING THE DELIVERY OF SERVICE TO OUR CUSTOMERS



High Quality Downhole Equipment



Our extensive assets and inventory are available for quick deployment globally. Thru Tubing Tools are available in sizes from 1-11/16" to 3-5/8", to accommodate a wide range of operations in 2-7/8" tubing up to 7" casing. Each job is supplied with the appropriate fishing contingency package.

Big Hole intervention tools range from 3-5/8" up to 11-3/4" OD and includes all necessary equipment to perform P&A and slot recovery up to 36" OD.

Stringent tool maintenance and servicing, & extensive quality assurance ensures our equipment is maintained to the highest possible standards.

Experienced & Skilled Field Supervisors

Our multi-skilled Field Supervisors are trained and experienced in both Coiled Tubing and downhole tool operations – improving synergies and ownership in all intervention operations..

All our operational personnel are trained to the highest standards. Mandatory training / certification includes; First Aid and CPR, Fire Safety & Evacuation, Working At Heights, Permit to Work (PTW), BOSIET/HUET, IWCF Well Intervention certification.

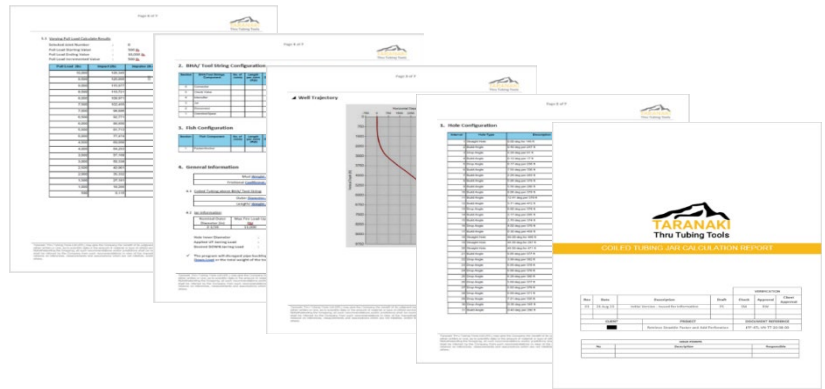
Our team includes industry leading experts who have performed some of the most challenging and demanding well service projects.

As a thru tubing solution provider, our obligations to our customer extend beyond providing quality tools. Our mission is to deliver high quality equipment, services, engineering support and customer service to ensure that your operations run as smoothly and efficiently as possible.

Engineering & Job Planning Support

Design of Service

Our Design of Service demonstrates our accountability in achieving operational excellence with every customer we work with. We work closely with you to ensure we deliver safe, economical and reliable services.



Optimize Thru Tubing BHA's

Our In-house Wellbore Intervention Engineers will support your operations with engineering support and real time modelling to optimize various Thru Tubing BHA's including;



Jar Placement Optimization simulation; ensuring efficiency of the tool performance downhole. Proper placement can affect the jar performance by a factor of as much as four. Simple rules of thumb for jar placement do not always work. Recognizing the importance and complexity of analyzing jarring mechanics, the engineering team is ready to support your operational needs.

Thru Tubing Mud Motor Optimization Modelling, to design the optimum flow rates, co-mingled n2 percentages where required and torque outputs, friction and weight at bit calculations.

Stimulation Jetting Tools- Spin Cat Rotating Jetting Nozzle

Hydro pull Extended reach modelling - for long deviated wells.

Motor Gas Separator (MGS) Modelling- Nitrogen Calculations.

Flawless execution starts with good planning. Taranaki Thru Tubing Tools shall ensure that all tool, equipment, personnel, and job specific contingencies are in place prior to mobilization and throughout the operation.

Stringent tool maintenance and servicing, and extensive quality assurance ensures our extensive tool inventory is maintained to the highest possible standards by our team of competent, trained personnel. Every tool is stripped down, inspected, and rebuilt to NS-2 (DS-1 cat. 3-5 when required). Inspection and maintenance reports are available for client review and audit and provided as part of our quality package prior to every load out.

Dyno-Master Progressive Cavity Motor Verification System



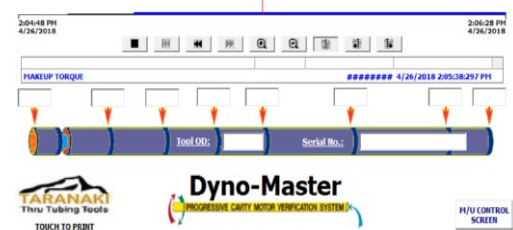
The Dyno-Master provides after redress, pre-run and post run motor performance verification.

Providing a visual representation of the correlation between an applied flow rate and resultant pressure, speed, and torque of the motor, this leading technology is the only way to verify that motors are fit for purpose after maintenance. Pre- RIH surface checks can verify that a motor can rotate, but are unable to determine torque, speed or functionality which can save our customers an entire day operating costs should a motor be run to depth only to not perform and be requiring POOH to surface.

Our **Torque-Master Make-up & Break Out Unit** provides a safe and easy way to make up and break out tool joint connections. The hydraulic torque logging system also records, and monitors make up connections of each connection on the tool and the printout is supplied to our customers in the pre-load out maintenance and service package.



Our **Hydraulic Friction Breakout Units** work off the same principle as our torque make break unit but utilizes changeable wrenches for the various tool OD's that require to be torqued and grip by friction alone. We have integrated these units to our Data Acquisition recording system – allowing us to provide customers the same torque conformation print outs as that of our other service equipment.



Our strategic locations across Asia Pacific providing dedicated service and maintenance facilities, fully self-sufficient in running and performing preventative maintenance for a complex range of tools, both in the workshop and in the field.

Little Jerk Mini Tong



Our Little Jerk Mini Tongs are available for field use. They provide a safe and easy way to make up and break out tool joint connections on small OD tools and pipes. This portable compact service tool offers a fully hydraulic system designed for practicality and with rig floor and service shop safety in mind

The back-up and tong are mounted into a durable crash frame that integrates the unit controls, making it easily handled and operated by one person. Our hydraulic power packs accommodate the tongs which can be taken to wells site location and used to make up connections in the field, powered by a portable compressor

Jar Tester

Our Jar Tester system is designed specifically for small Thru tubing jars, to ensure that the functionality of fishing jars pre-RIH, meet the manufacturer specifications. The horizontal main frame includes a hydraulic cylinder that applies tension and compression forces in direct axial alignment with the test piece



Quality Control Records

Complete quality records are maintained for every piece of equipment both service and downhole. This includes **Manufacturing Technical units** (technical specifications, strengths and operating parameters), **Maintenance Service-units** (instructions, CAD and assembly drawings, assembly drawings and testing criteria to manufacture specification.) **Equipment Maintenance Sheets** detail critical components, assembly drawing of the tool as well as make up torques. **3rd Party Inspection MPI certificates**. **Testing Documentation** (includes graphs, charts and operating parameters of service and testing equipment).

Stringent tool maintenance and servicing, and extensive quality assurance ensures our extensive tool inventory is maintained to the highest possible standards by our team of competent, trained personnel.

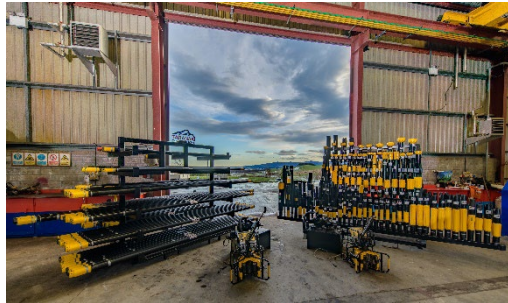
New Zealand

Most Extensive range of Thru Tubing Tools Inventory available in Australasia

Facility certified to



Most extensive range of Thru Tubing Service & Maintenance equipment available in Australasia



Located at 8a Swans Road, Bell Block, Taranaki. Our facilities are split across 3 buildings incorporating our main office block, storage facility and workshop maintenance shed. Our dedicated and well-equipped facility provides complete Thru Tubing solutions to meet all your unique challenges and operational problems. We are fully self-sufficient in running and performing maintenance and redress for a complex range of tools both in the workshop and in the field.

Thailand

Extensive Thru Tubing, BH Fishing, Plug & Abandonment inventory

Operations, Engineering, Maintenance, Administrative & Field Services Support

Dedicated, Well-Equipped Service and Maintenance Workshop



Located in Moo 2, Thumbol Phawong, Amphur Muang, Songkhla. Our Songkhla base services all our South East Asia operations.

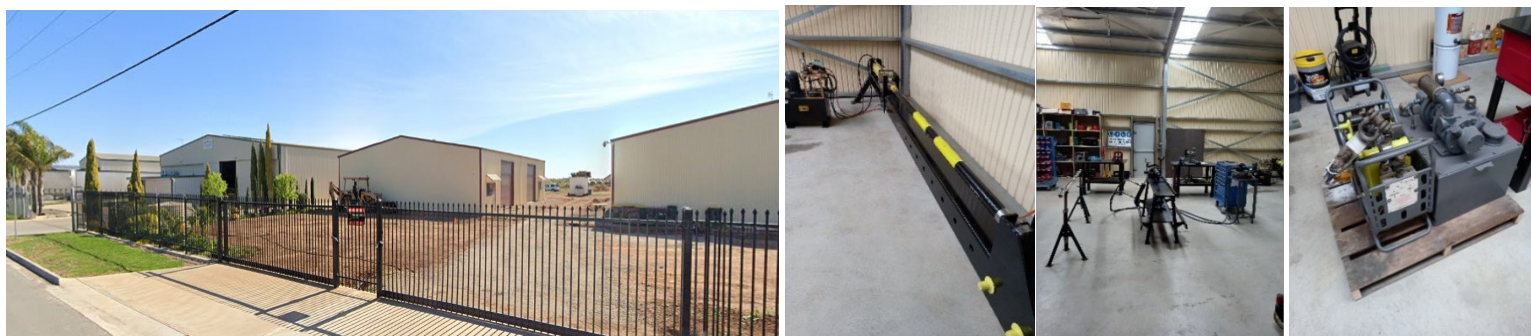
Songkhla's reputation as a vibrant hub for the Oil and Gas Industry enables us to leverage of the existing infrastructure and availability of experienced local personnel to support our operations.

Australia

Extensive Thru Tubing Assets & Inventory

Operations, Engineering, Maintenance & Field Services Support

Dedicated, Well-Equipped Service and Maintenance Workshop



Taranaki Thru Tubing Tools premises are located at 32 Hawker Rd, Burton 5110 South Australia. Our facility incorporates a main office, storage facility and workshop maintenance shed (170m²).

Our extensive tool inventory is maintained to the highest standards by our team of qualified, trained, and competent personnel.

Every tool is stripped down, inspected, and rebuilt to DS-1 cat. 3-5. Inspection and maintenance reports are available for client review and audit and provided as part of our quality package prior to every load out.

All lifting and equipment and slings are inspected annually to DNV-GL-ST-E271, Offshore Containers and/or BS EN 12079-3:2006, Offshore containers and associated lifting sets.

All our facilities are fully self-sufficient in running and performing preventative maintenance for a complex range of tools, both in the workshop and in the field. Our extensive assets and inventory are available for quick deployment globally

MOBILE SERVICE UNIT



As a complete thru-tubing specialist, we now offer our customers a state-of-the-art Mobile Service Unit, and Real time coiled tubing telemetry data van - allowing us to expand our land based thru-tubing and real time coil tubing telemetry

OUR CUSTOMERS



TOTAL



HALLIBURTON



Our customers comprise of Oil and Gas Service Providers, and Operators across Australasia and Asia Pacific.

We lead with a commitment to safety and service quality at every level of our organization and are dedicated to the health and safety of our employees, customers, and contractors as well as to the protection of the environment in the communities in which we live and work.



As we extend our services geographically, we acknowledge, and are dedicated in meeting and exceeding our obligation to contribute to the local communities in which we work. This includes our commitment to employing and training local workforce.

We are proud of our diversity and growth opportunities we offer our workforce.



TARANAKI
Thru Tubing Tools

TARANAKI
Thru Tubing Tools

New Zealand

8a Swans Road
Bell Block
New Plymouth 4312
Taranaki

Australia

32 Hawker Rd,
Burton 5110
South Australia

Thailand

436/27 Thanadee Klongwong Rd
Moo 2 Thumbol Phawong
Amphur Muang
Songkla 90100

office@taranakithrutubingtools.com
<https://taranakithrutubingtools.com>

TARANAKI
Thru Tubing Tools